

AIFEMA MEETING EDMONTON 10-12 September 2024

RainStream™ Mobile Towers
for
Large Area Wildfire Suppression



**WILDFIRE
INNOVATIONS INC**

Who's Behind Wildfire Innovations Inc.?

- Don Hallett – President : certified welding inspector, inventor.
- Brian McIntosh - Advisor : (BC) - Former BC Wildfire Superintendent
Service for 500 Wild Fires
- Pat Guidera - Advisor: RPF, twice director of AB Assoc. of Forest
Professionals, AB Forest Superintendent
- Rolf Wenzel - 30 years building technology and manufacturing startups
- Dale Hansen - over 30 years building and running energy service and
supply companies
- Dave Anderson - 20 yrs oil & gas sales and marketing. 3rd new startup

Partnered with



What Is RainStream

- RainStream is a fire suppressant rapid response pull behind trailer
- 105' Telescopic water cannon.
- 700 to 1000 gpm dispersal.
- Free standing – self leveling out riggers – with attached guide wires
- 7 – 15 minute deployment



Applications

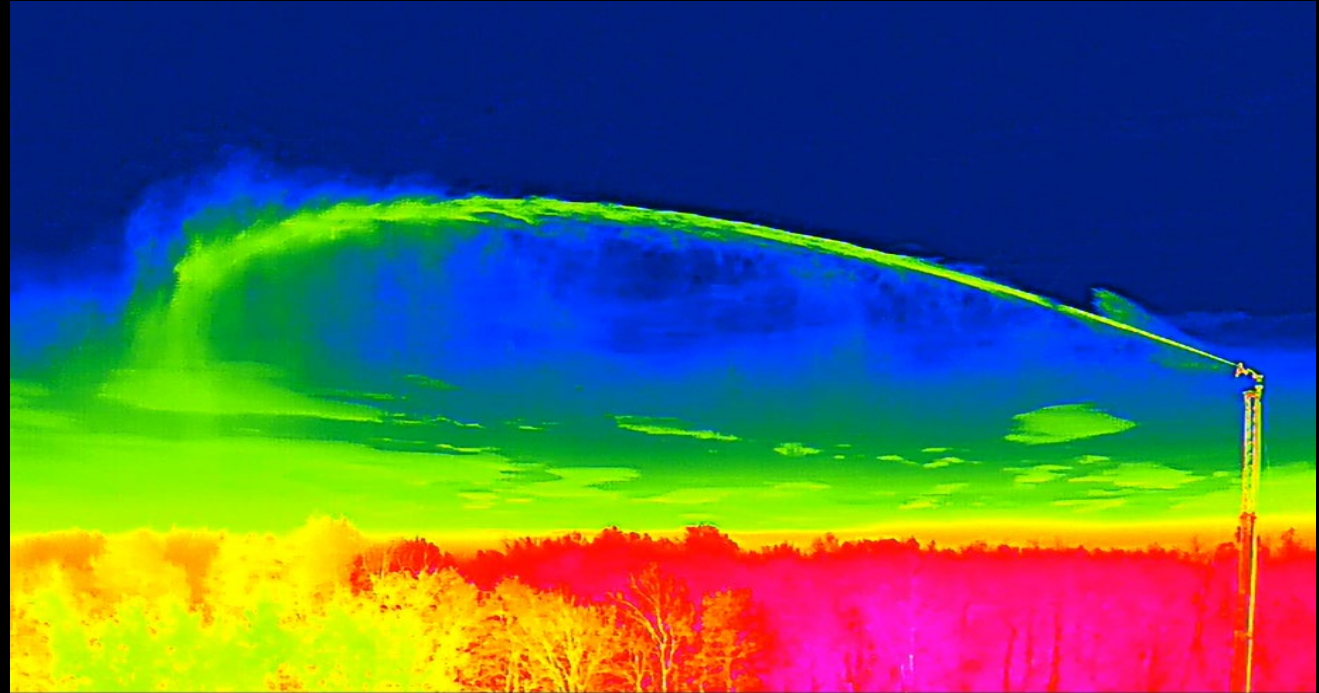
- **Pre-Fire:** Determined water source allow for pre-soaking of vast areas ahead of fire - repeat / repeat / repeat
- **During Fire:** Provide protection to critical assets. Example – ensure power grid / water treatment plant / Hospital stay safe
- **Emergency Evacuation:** Muster Point – ensure human survival exiting towns, plants – water dome protection
- **Post:** Mop Up – provide assistance in helping put out hot spots after fires.



Ft. McMurray Industrial Area 2016

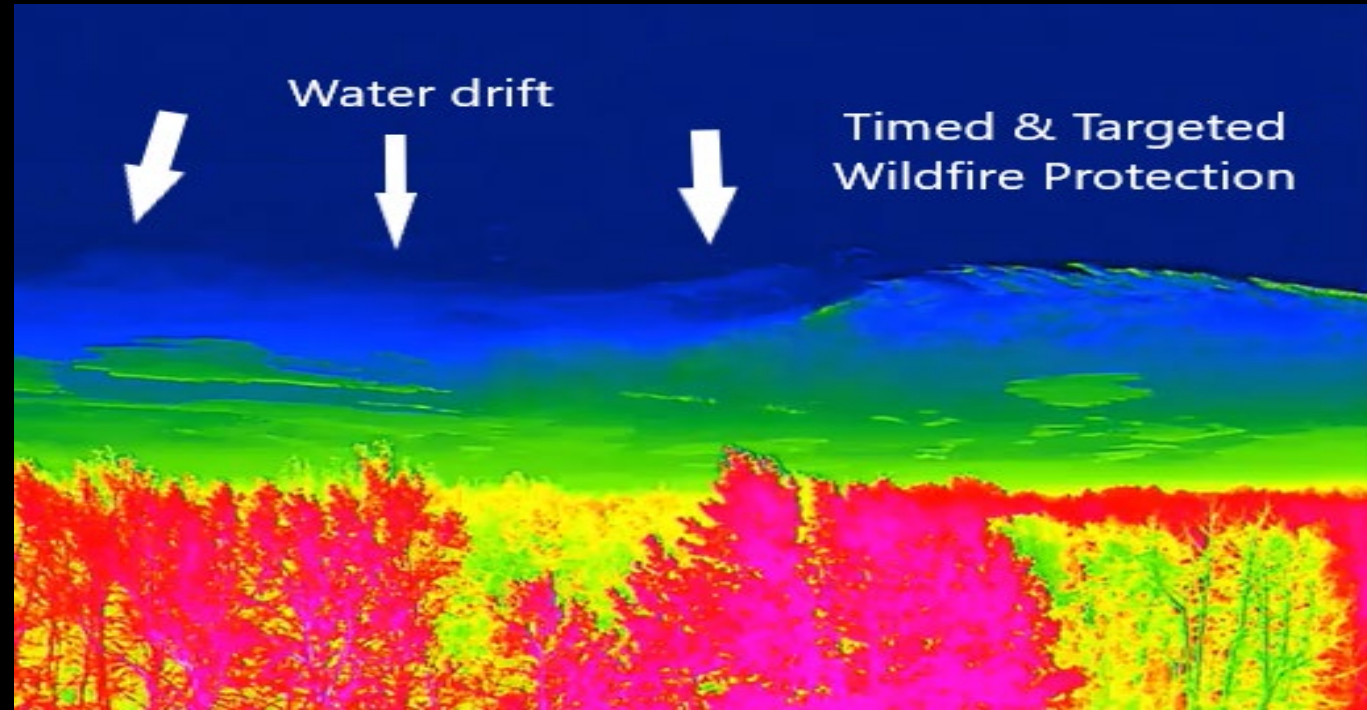
Mobile Rain Tower

- Patent pending 100 ft (32 m) tall trailer integrated mobile telescoping tower
- Soaks up to 7 ha (18 acres) , mists up to 65 ha (160 acres) per location.
- Turns any hydrant, tank, bladder, pond or river into rainfall.



Turns Wind from Foe into Friend

- Wind carries protective mist to mitigate spotting hundreds of metres downwind
- Wets tree canopy to mitigate crown fires
- Enables proactive microclimate management during extreme risk periods



Specs - 1

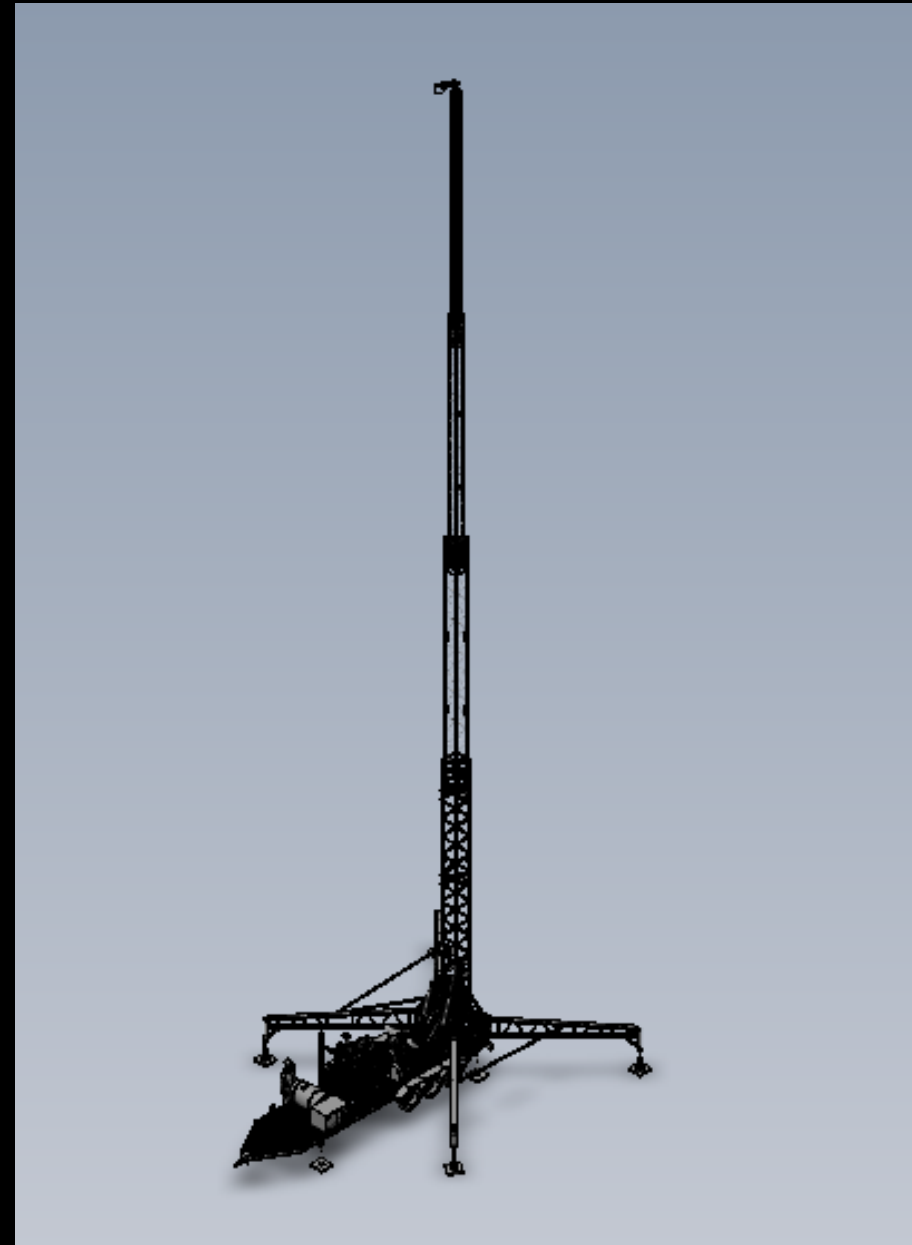
- 4,000 litres/min - 1000 gpm
- Throw 150m (soaking)
- Misting 500m+ (wind dependent)
- Setup time < 10 - 20 minutes



25% of Max Height

Specs - 2

- Footprint W=9m (30ft) L=12m (38ft)
- Can be towed by 1 ton pickup
- Wind rated to 80 km/h at max. height (higher wind at lower height)



Sample Deployment Plan

- RainStream soaking area (300m diameter)
- Consider wind when positioning
- Spray Arc adjustable from ~30-360 degrees



Suncor Firebag Village

Municipal Layout

- Can be used in Proactive mode to manage municipal microclimate during extreme fire risk



Foams & Gels

- Spray nozzles, flow rates, pressures adjustable
- Open to testing various suppressant formulations at industrial sites



Thank you

Dave Anderson,
Business Development
dave@wildfireinov.com
403-477 -0274

