

A photograph of three yellow Caterpillar bulldozers loaded onto a flatbed truck at night. The scene is illuminated by a warm, orange-red light, likely from a fire or emergency lights. The bulldozers are arranged in a line on the truck. The first bulldozer on the left has "450i LGR" and "93 20000" visible on its side, along with "RC" and "Grandt" logos. The second bulldozer has "CATERPILLAR" and "D3K" visible. The third bulldozer has "CATERPILLAR" and "D3K" visible. The truck's chassis number "31-2214" is visible on the side. The background shows a building and a dark sky with some light flares.

***PREPARING
FOR
THE FUTURE OF WILDFIRE THREAT***



Quintech Company Background

- Formed in 1999
- Worked in the Wildland Urban Interface arena all over North America.
- Response, Training, Wildland Urban Interface Preparedness planning.
- Involved with the NFPA Wildland Committee Since 2008.



Recent Client List

- New Gold New Afton Mine
- Golden Predator Exploratory
- Willow Creek Mine
- Kinder Morgan
- Suncor
- Fortis BC
- Kennedy Space Center
- Montreal Transit Authority
- Siwash Wilderness Resort
- Echo Valley Ranch
- Bella Cola Heli Sport
- Dolden Wallace Folick LLP
- Whitelaw Twining Law Corporation
- PyroLance



What is the Future?

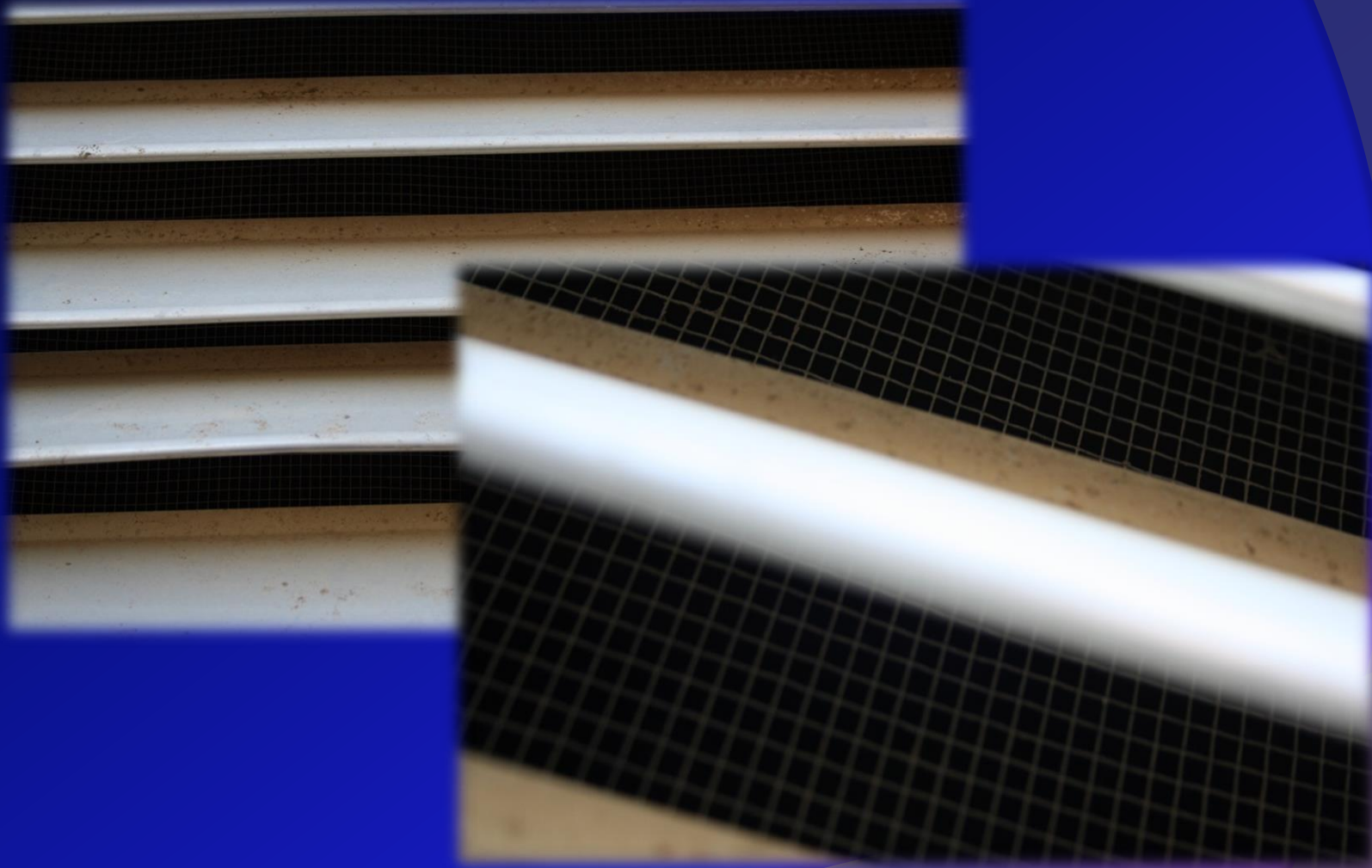
- ⦿ Larger Fires Effecting Developed areas
- ⦿ Greater fire complexity
- ⦿ Greater Costs
- ⦿ Greater Strain on Responding Recourses
- ⦿ Loss of Production
- ⦿ Loss of Infrastructure
- ⦿ Need for Planning and Training



What causes ignition & Loss?





















What are the Real Costs?



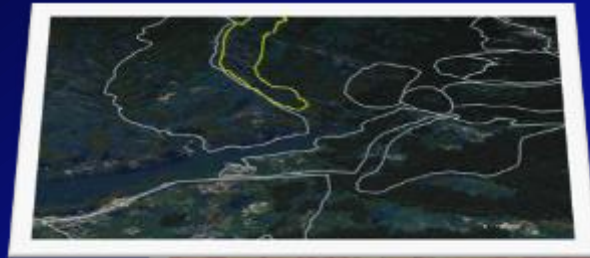
What are the steps?

- Conduct a full assessment of risk
- Build a Mitigation Plan and Implement it
- Build a Response Plan
- Train your Staff at all levels
 - Include each Department

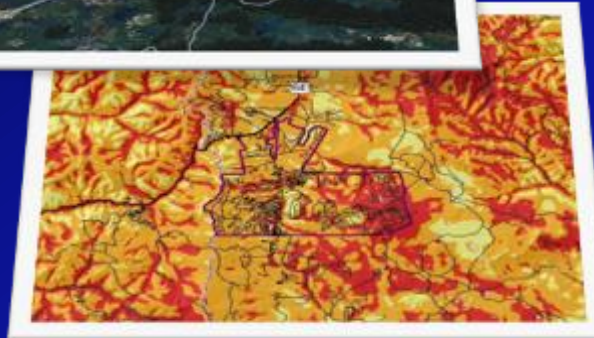


Site Wildfire Risk Assessment

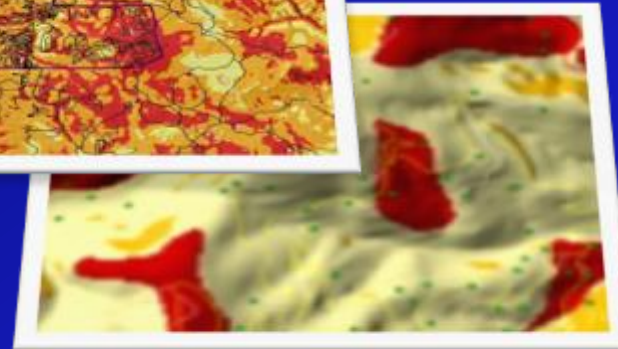
Fire Shed Zonal Analysis



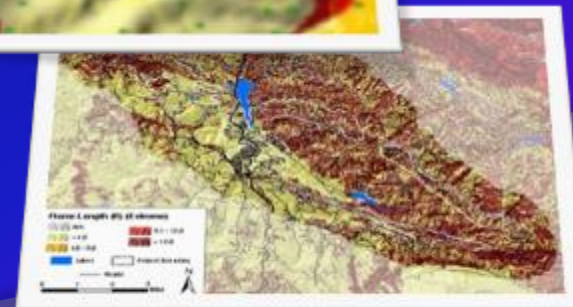
Forest Condition Class (Fire Return Interval)



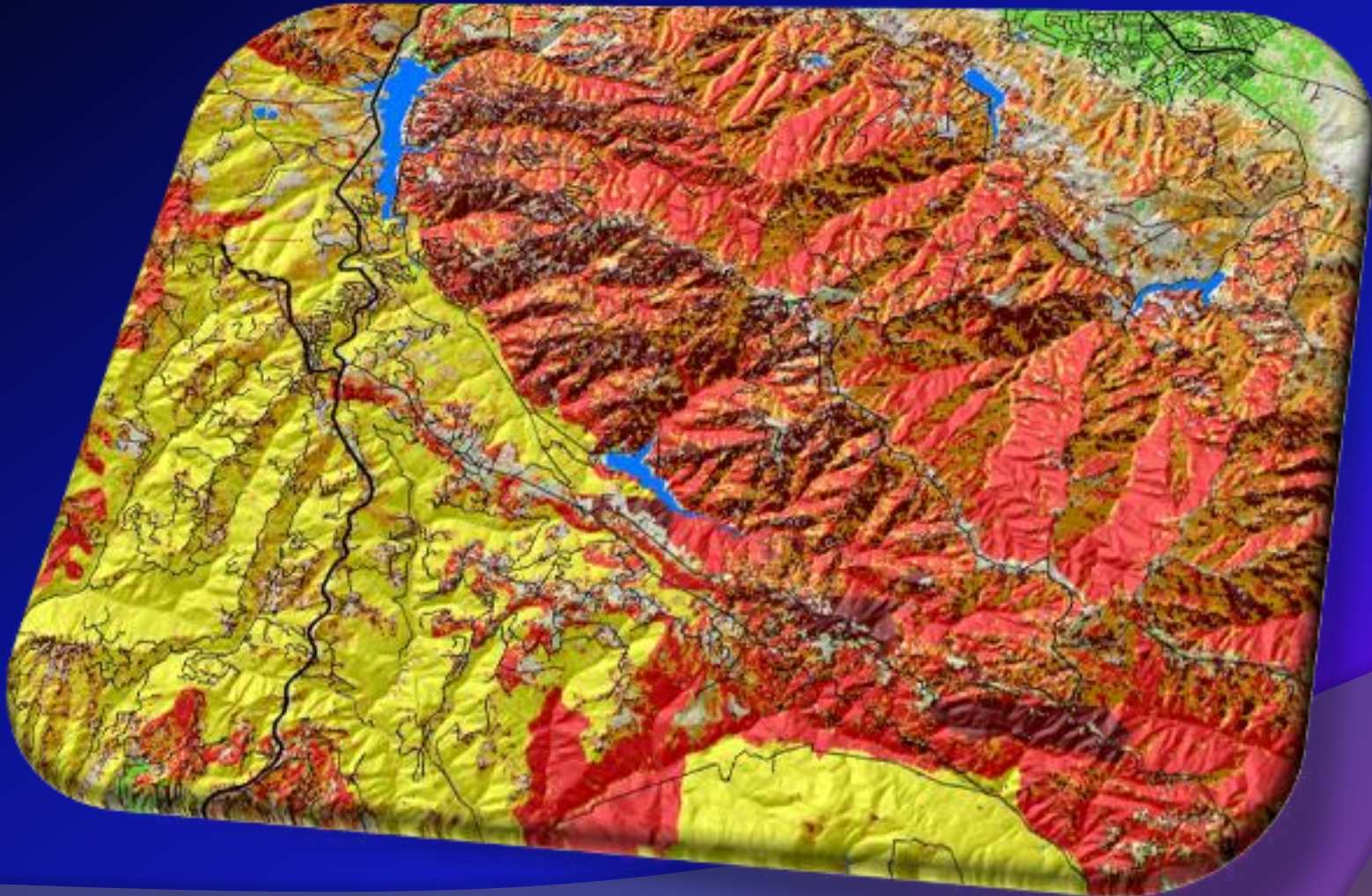
Dangerous Topographic Features



Fire Behavior Analysis



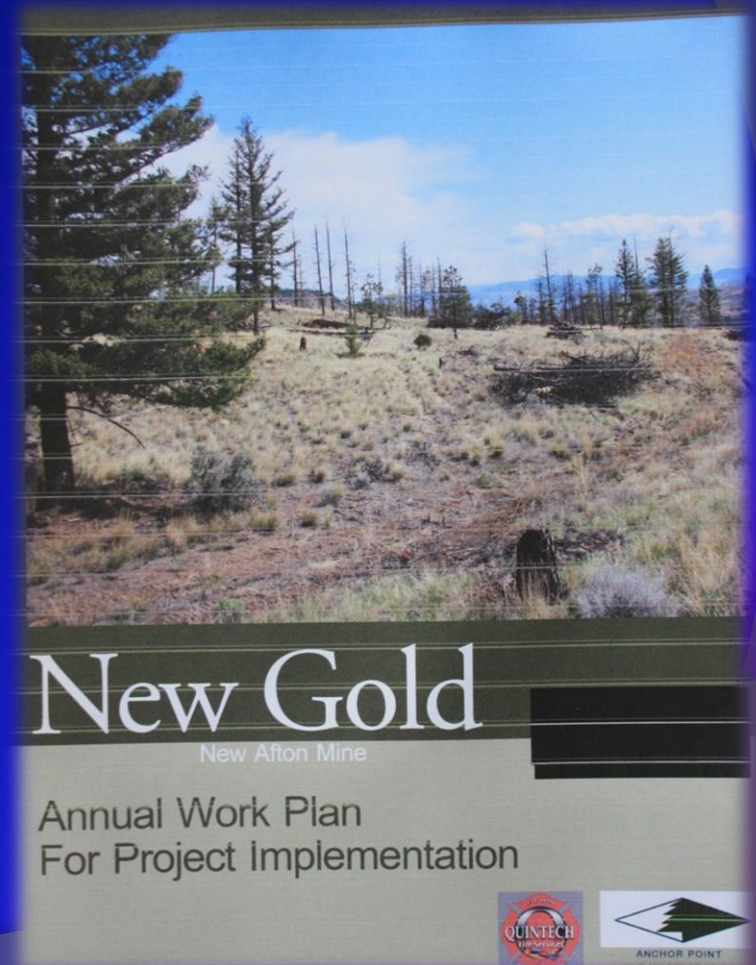
Culminating In A Scientifically Valid Hazard and Risk Assessment





Mitigation Plan

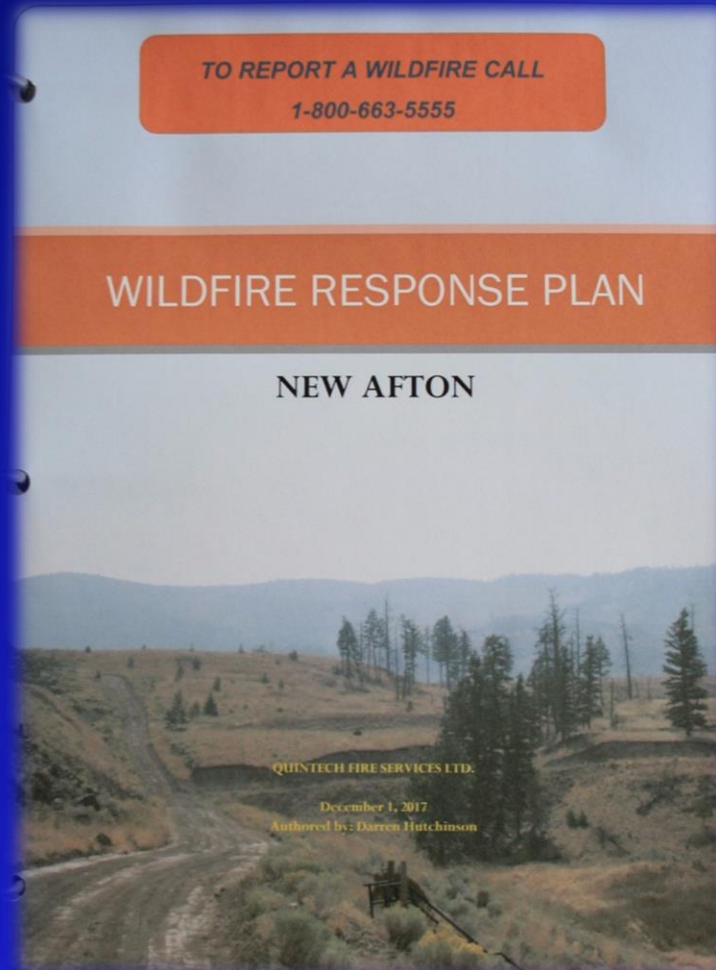
This plan is for the vegetation around critical infrastructure and access, which should include each building.





Response Plan

The Plan needs to be shared with all departments and mutual aid partners. Site Drill where possible. Each department has to be involved in some way.

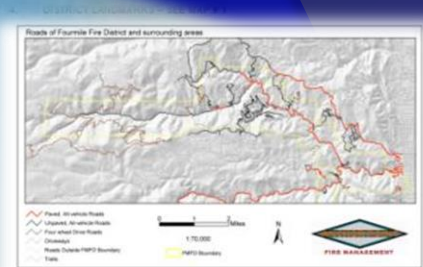


Response Plan

To help and direct incoming emergency personnel.

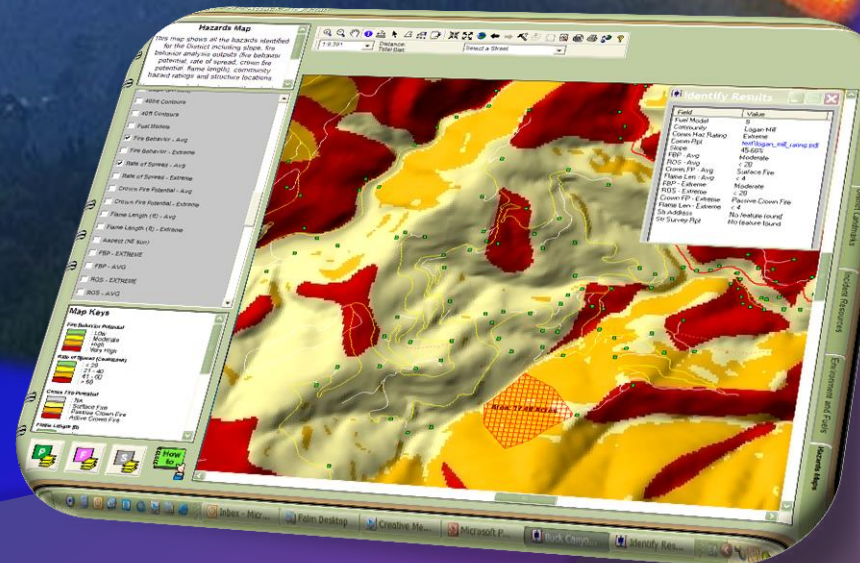
Focused on your valuable resources (structures, critical infrastructure)

Based upon a *Hazard and Risk Assessment*.



Mile markers increase from Nederland to Boulder

Highway 119 (Boulder Canyon Drive)	Mile	Landmark	Mile	Landmark
28	Chickadee	28.5	Red bridge	
29	Catch Rock	35.7	Black Tiger Gulch-old wooden bridge	
31	Emergency phone	35.8-35.9	Parking	
31	Sugar Loaf PD western boundary	36.1-36.2	Loop road	
32	West end of narrows	36.3	Brick Wall	
32	East Substress	36.7	Sugarloaf Road	
32	Practice Rock	36.8	Magnolia Road	
33	East end of narrows	37.0	Elvis Motel	
33	Boulder Falls	37.2	Bridge	
33	Topanga Tower	37.4	Bridge	
33.8-34.0	Parking	37.6	West end of Fourmile Fire District	
34	Deceitful Mile	37.8	Tunnel	
34	Happy Hour Craig	38.3	Red Lion Inn	
34	Security Risk	38.6	The Alps	
34	Boob Rock	38.9	Four Mile Canyon Drive	
34	2000 Rock	39.7	The Dome (emergency phone)	
34	2000 Rock	39.8	Elephant Substress	
34	Blue bridge - good parking	40.0	Boulder city limit	
35	Pizza bridge - good parking	40.4	Cannon Rock	



Protecting Resources and Investments

- ⦿ “Pre-Attack Plan”
 - Mapping and “GIS” information
- ⦿ Fire management plan
 - Fire planning (e.g. Prescribed fire, “let burn” areas)
- ⦿ Plans will reflect the owner’s goals and values



The Reality Of Wildfire Operations

- ◉ Wildfire planning is often no planning
- ◉ Having your plan will direct resources in your favor
- ◉ Work with your Insurance Provider while building your plan





Training





Where do you find the right Help?

- ⦿ Work with Mutual Aid Partners.
- ⦿ Look for companies with expertise and experience.
- ⦿ Look for full services companies.
- ⦿ Ask for references and check.
- ⦿ Work with Insurance Provider.



STAY & DEFEND?

- Do you have a Site Wildfire Plan?
- Is there an Evacuation Plan?
- Is there a Response Plan?
- Have you implemented the Mitigation Plan?
- Does your Response Team have the training and tools to deal with the Hazard?
- Do you Have agreements with Contractors?
- Plan should be known by all key players.
- Is your Evacuation Plan tiered?
- Are the personnel that are staying prepared to?
- Has the mitigation work been completed and maintained.
- Get your extra help rolling.





We are **STAYING!!**

- ◎ Business Continuity
 - Layer Evacuation
 - Layer Production
 - Plan for a Long Haul
- ◎ Response
 - Critical Personnel only
 - Support staff
- ◎ Back







**THANK YOU
ANY QUESTIONS**

Darren Hutchinson
dhutchinson@quintchfire.com
1-250-701-7082