

GAINFORD DERAILMENT

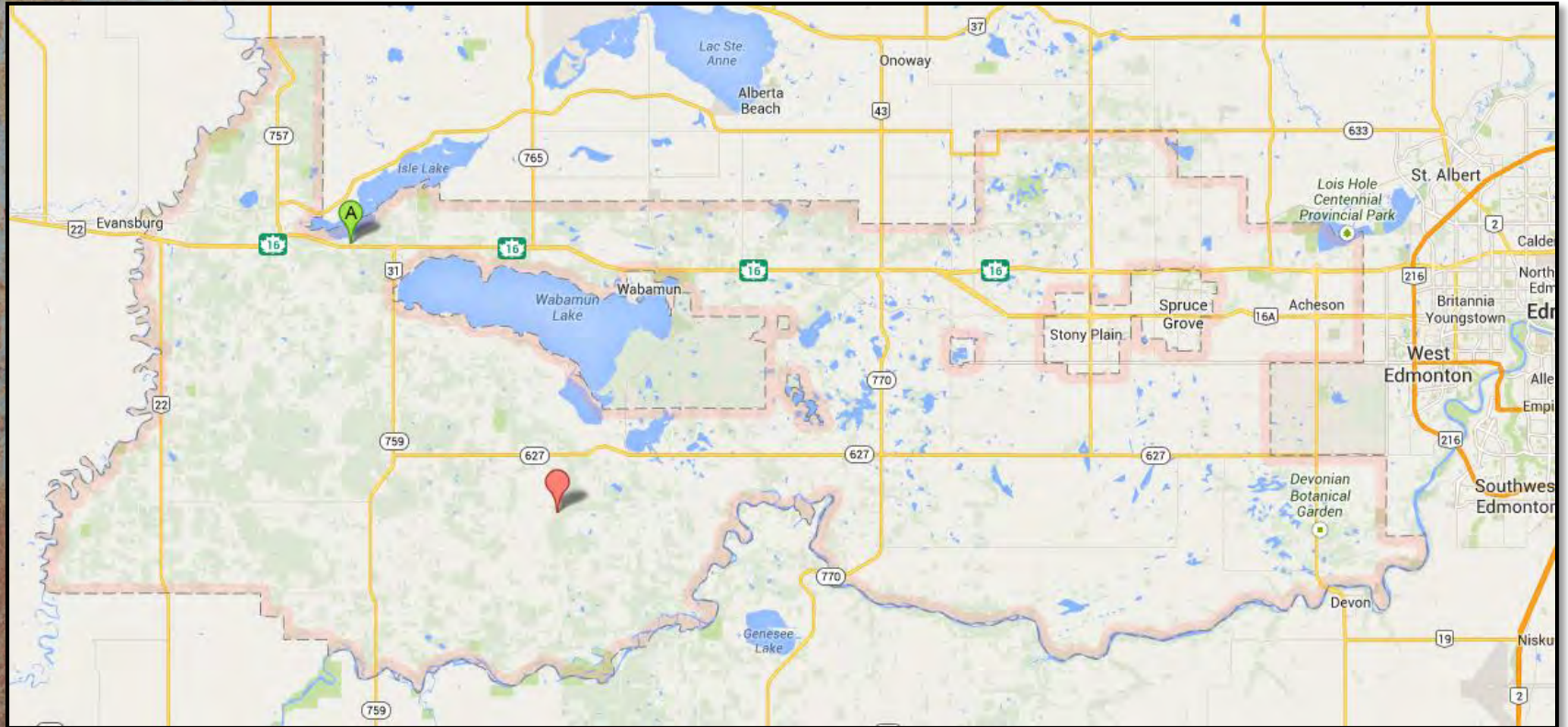
19 OCT 2013



THREE FOCUS AREAS

- ≡ The Incident and Tactics Used
- ≡ Lessons Learned By An Incident Commander
- ≡ Lessons Learned By Parkland County

GAINFORD



GAINFORD



INCIDENT OVERVIEW

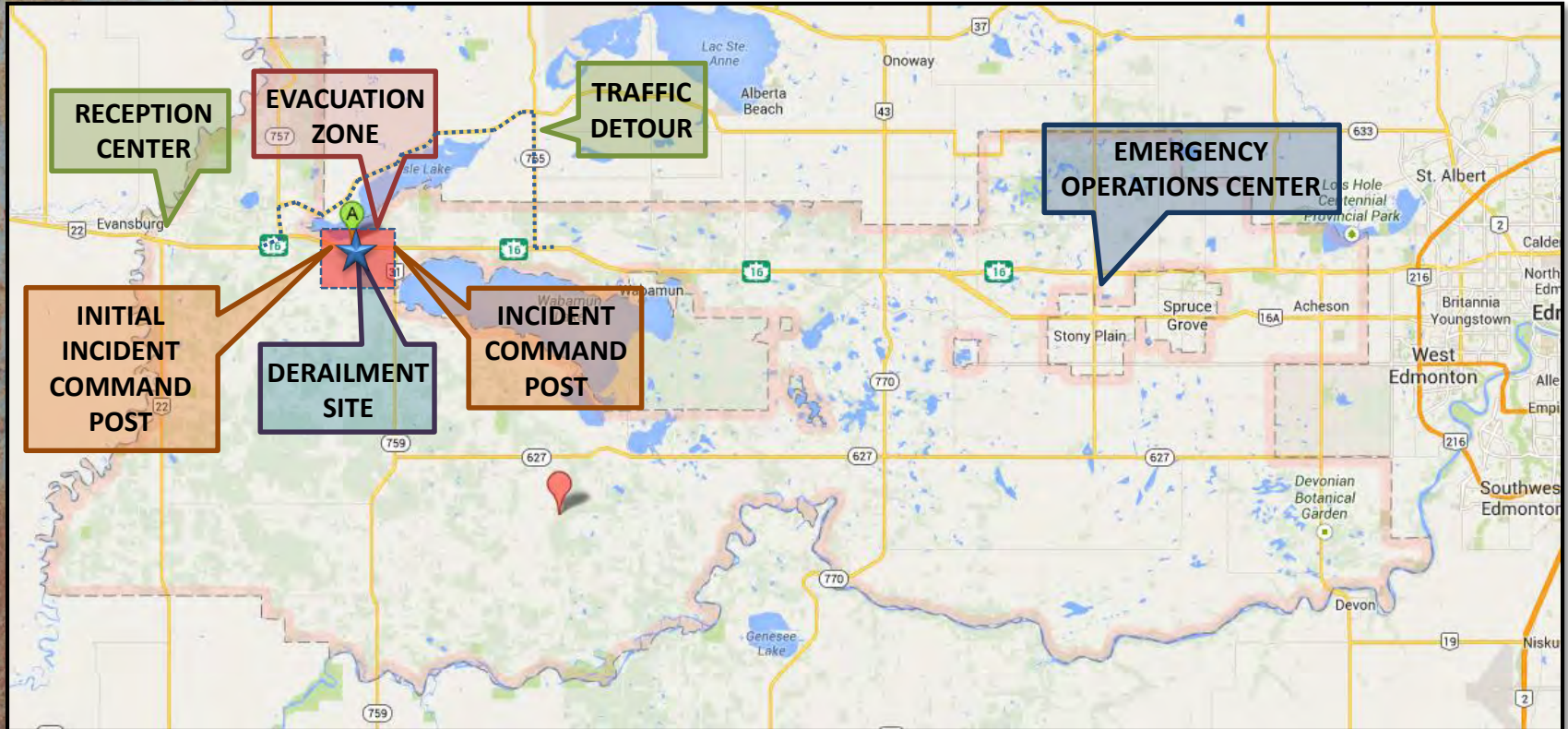
- ≡ 0100hrs 19 October 2013
134 cars train westbound from Edmonton to the West Coast experienced an undesired emergency brake application
- ≡ Railcars 13 through 25 had derailed.
- ≡ 4 derailed cars were petroleum crude oil and 9 cars were liquefied petroleum gas.

(Transportation Safety Board, 2014)

INCIDENT OVERVIEW

- ≡ Incident Time Duration: 5 days, 11 hours
- ≡ Evacuation of at least 135 residents
- ≡ Detour of Highway 16 – Yellowhead Trans Canad
- ≡ Three invasive procedures used resolve the incident

INCIDENT OVERVIEW



INCIDENT SITE







STAKEHOLDERS



Royal Canadian Mounted Police



Transportation Safety Board of Canada



Transport Canada



A vertical strip on the left side of the image shows a rusty, weathered metal surface with a mix of brown, orange, and blue tones. The rest of the image is a plain white background.

CHALLENGES / RISKS

Gaseous Vapour



WILDLAND FIRE



UNDERGROUND FACILITIES

HP ATCO PIPELINE

ALBERTA SUPERNET

KINDER MORGAN – TRANS MOUNTAIN

PARKLAND
GAS COOP

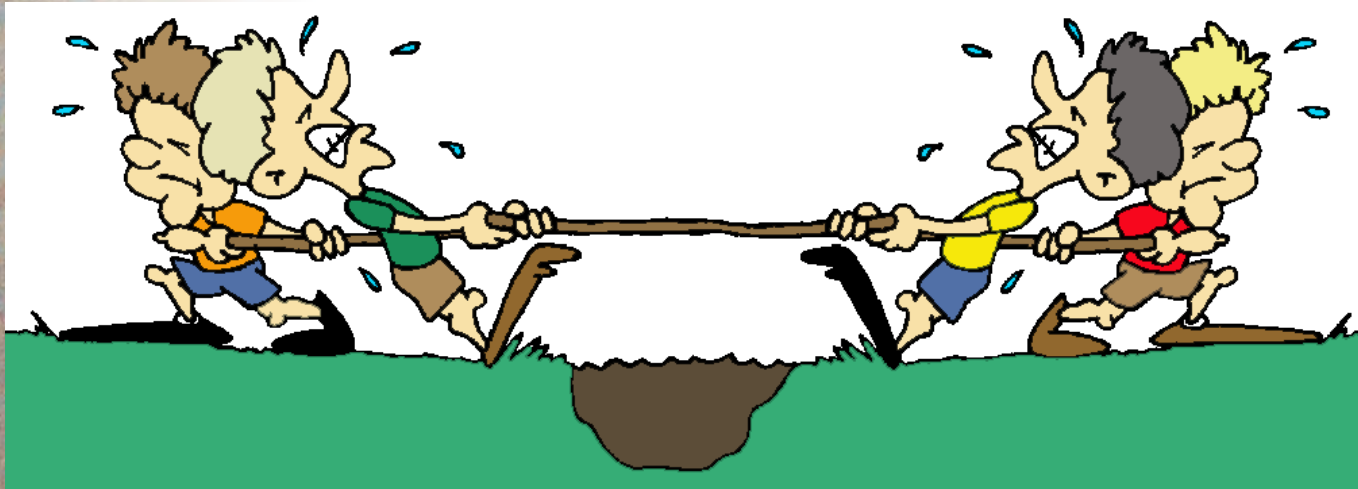


UTILITIES



Municipal
Responsibility

Big Industry
Responsibility





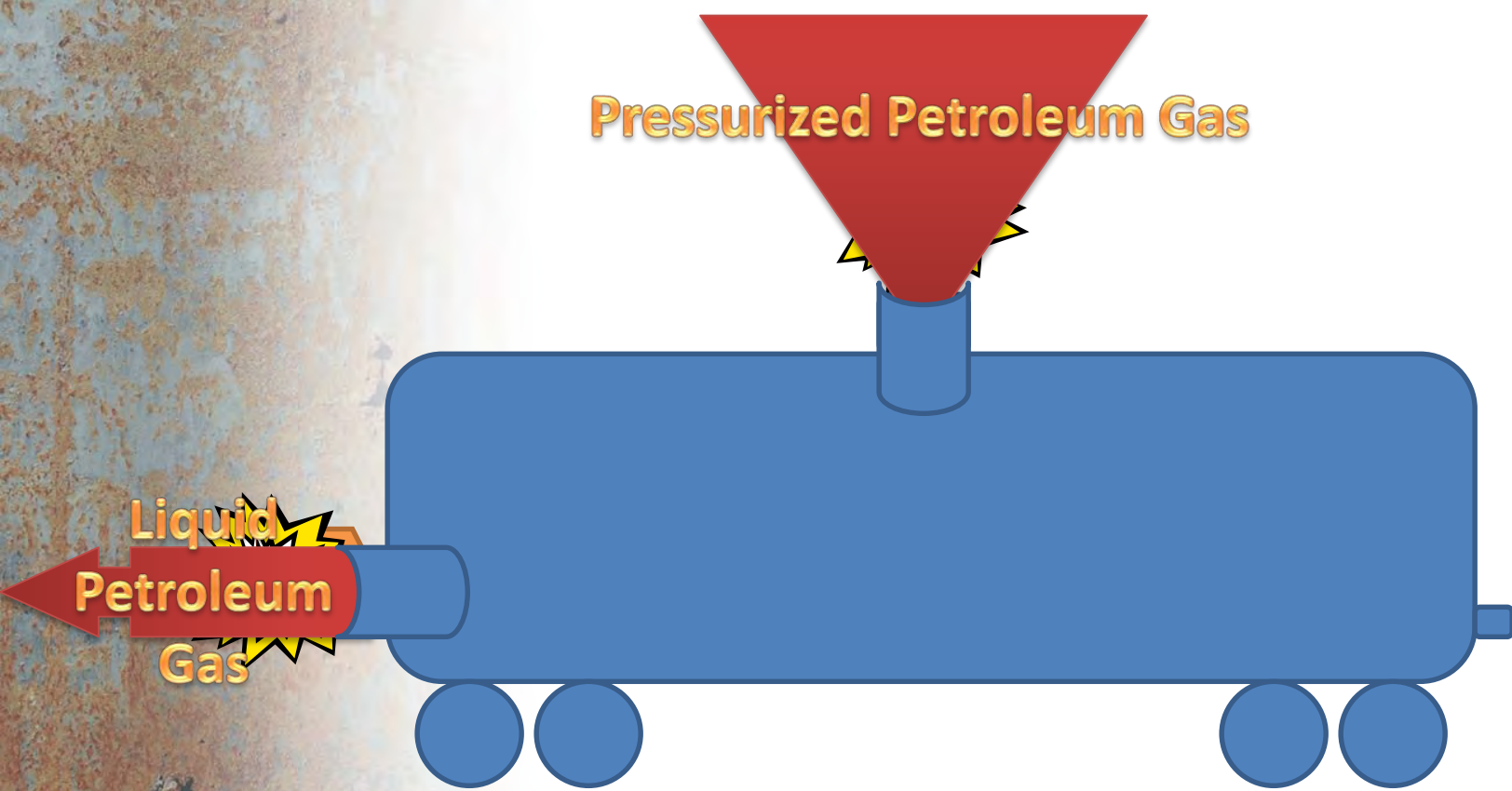
STABILIZING THE INC

A vertical strip on the left side of the image shows a heavily rusted metal surface. The rust is a mix of brown, orange, and blue-grey tones, with some areas where the metal is more exposed. There are some small, dark spots and a larger, irregular hole or indentation near the bottom left.

VENT AND BURN ||||

Pressurized Petroleum Gas

Liquid
Petroleum
Gas



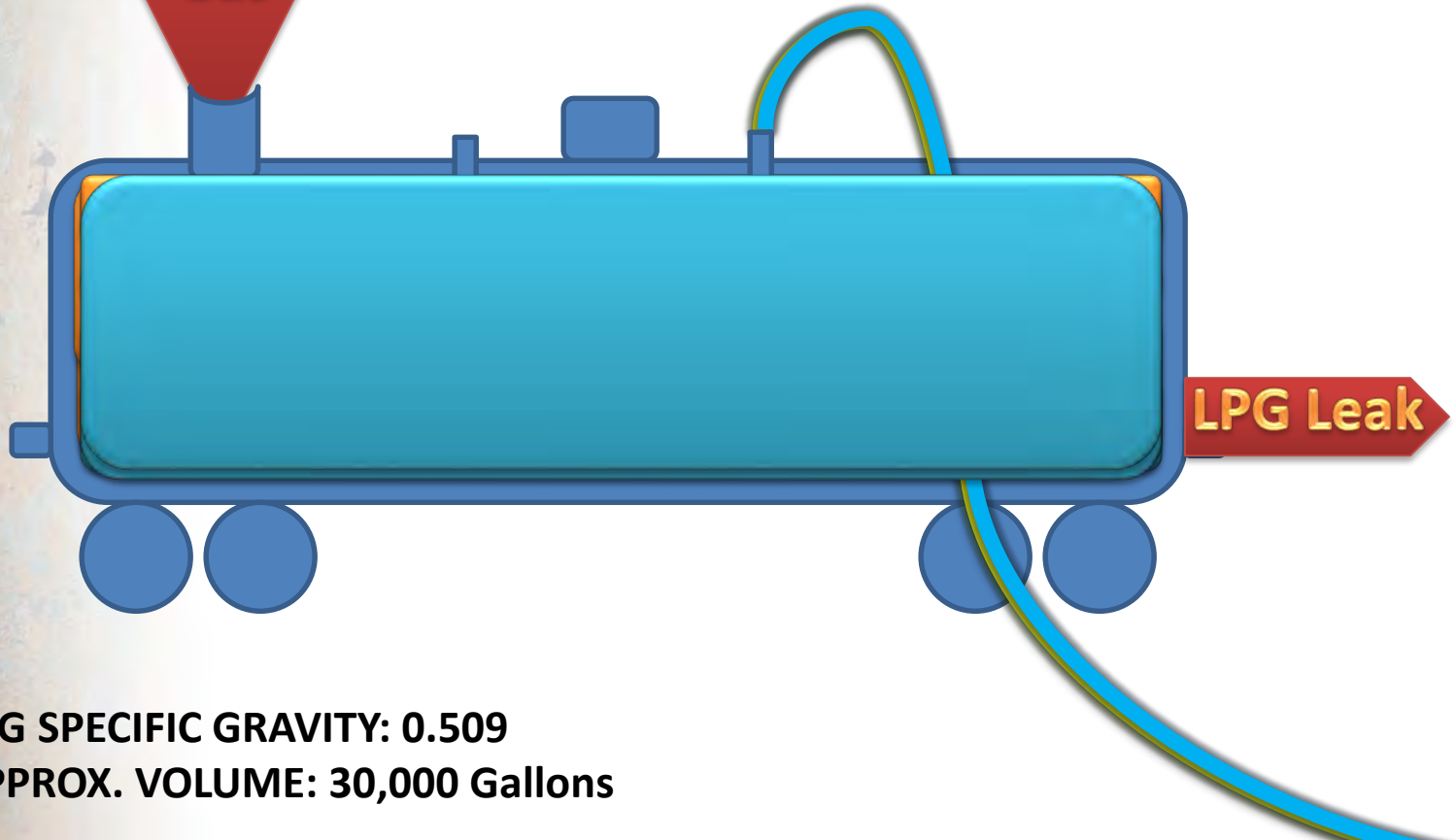






FLOAT AND BURN

**Pressurized
Petroleum
Gas**



LPG SPECIFIC GRAVITY: 0.509
APPROX. VOLUME: 30,000 Gallons







“Human beings, who are almost unique in having the ability to learn from the experience of others, are also remarkable for their apparent disinclination to do so.”

- *Douglas Adams, author of The Hitchhiker's Guide to the Galaxy
NATO Lesson Learned Handbook, 2011*

INCIDENT COMMANDER



LESSONS LEARNED

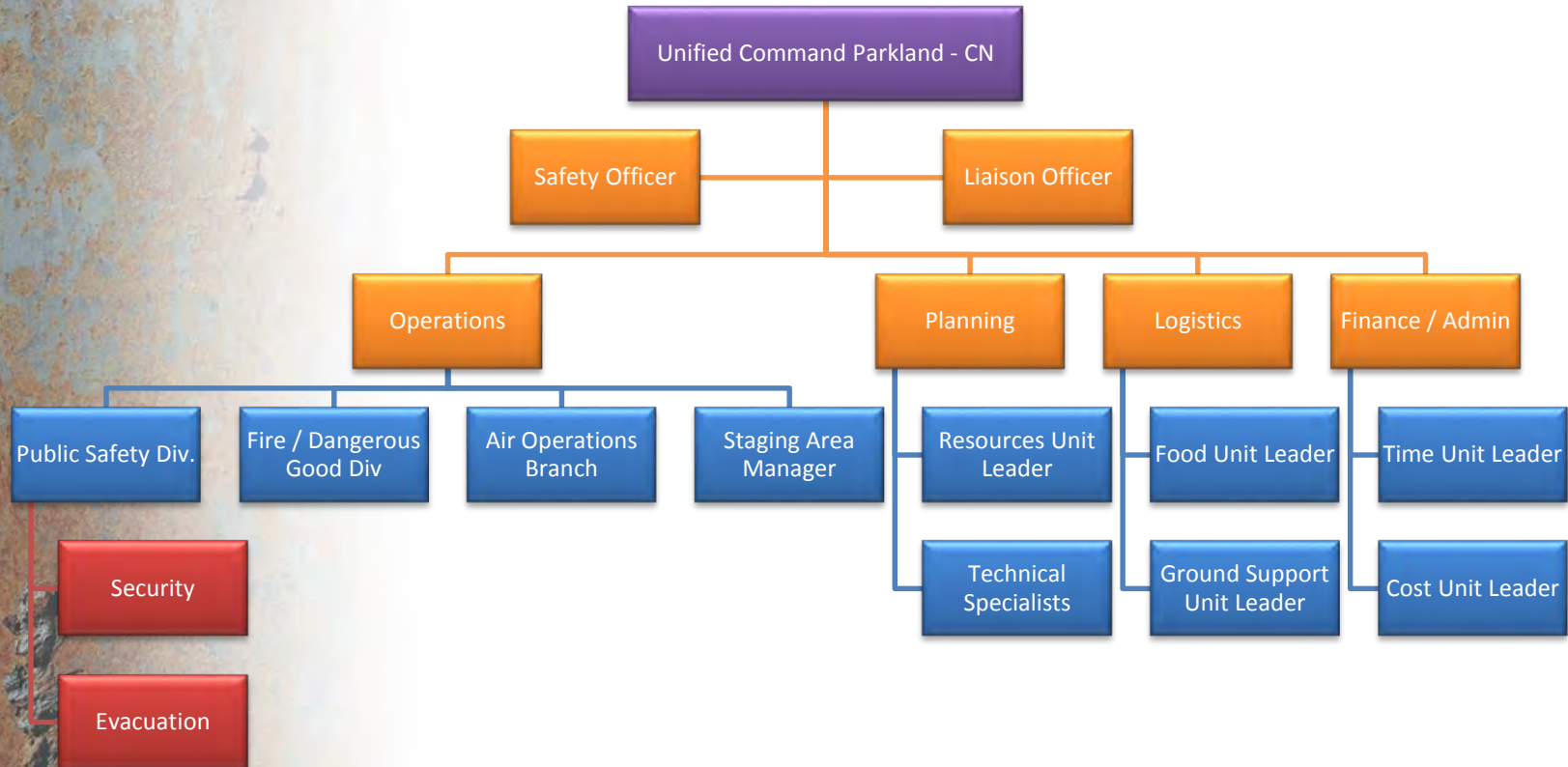


Municipal / Private Unified Command

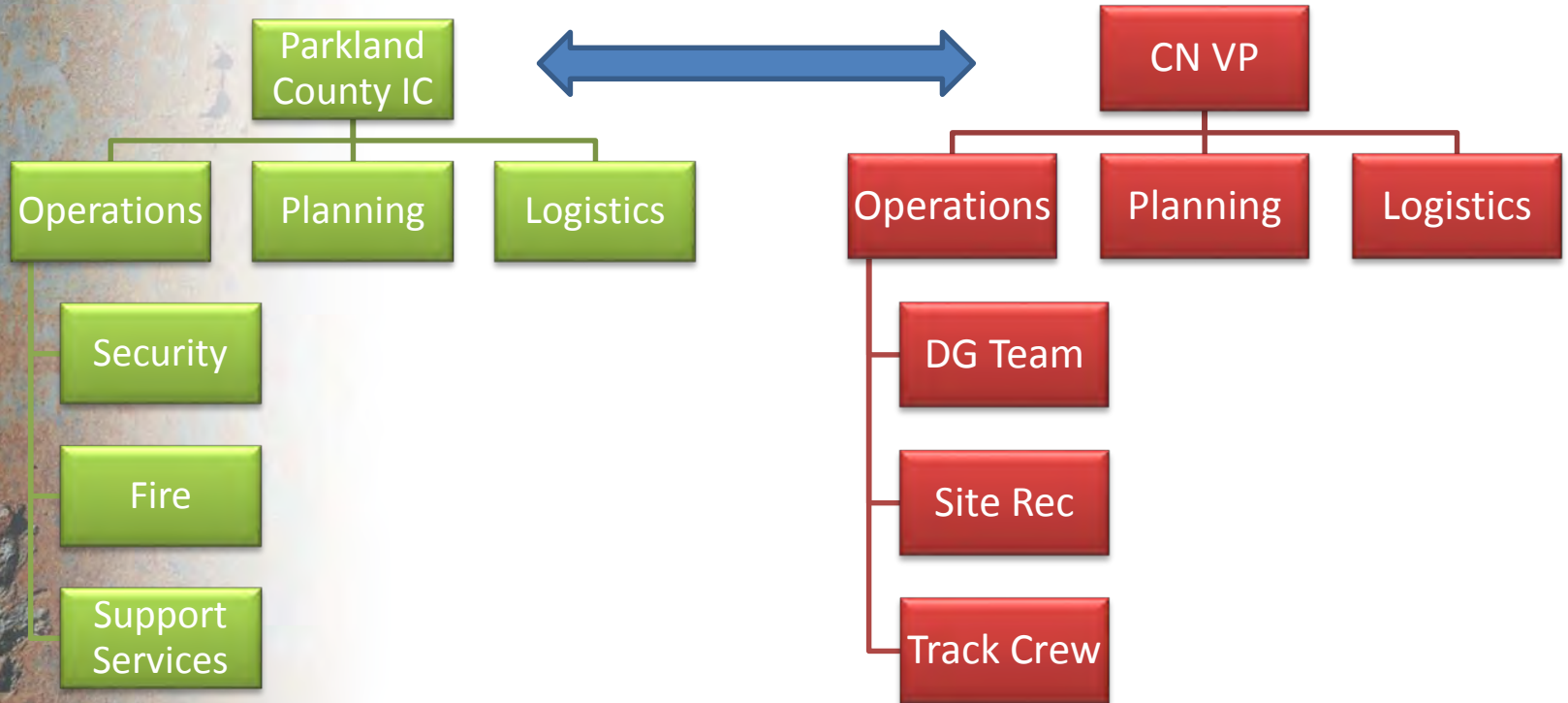


...Well Maybe

Municipal / Private Unified Command

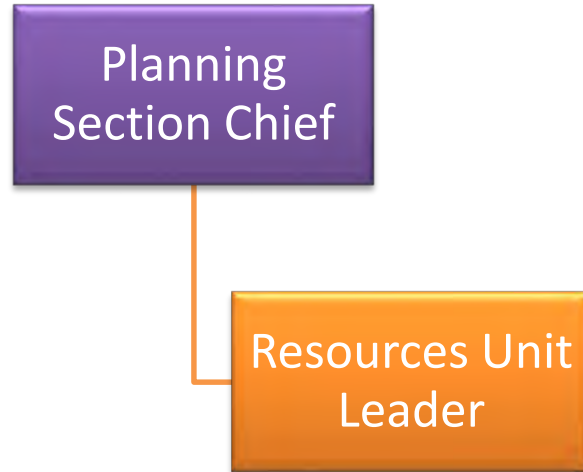


Municipal / Private Unified Command





Resources Unit Leader





Ground Support Unit Leader

Logistic Section
Chief

Ground Support
Unit Leader



Evacuation Message





Site Facilities





...Trust in Technical Experts?

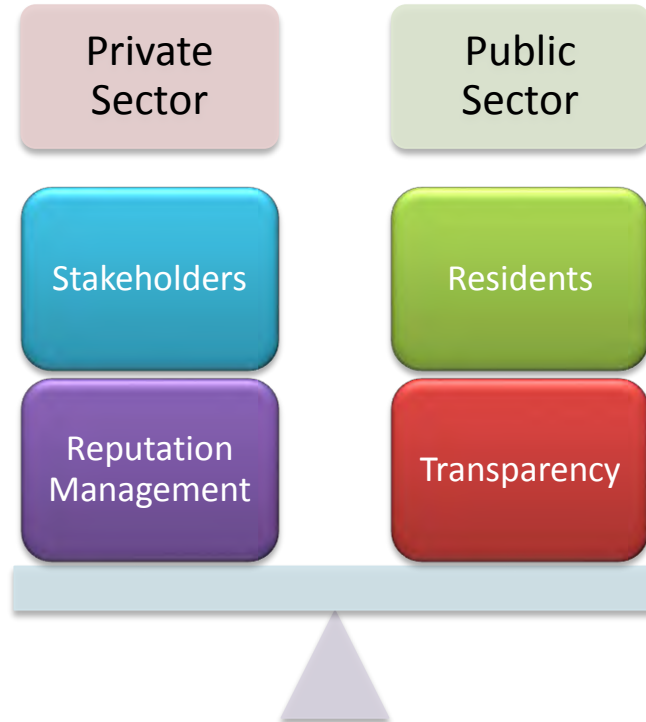


PARKLAND COUNTY

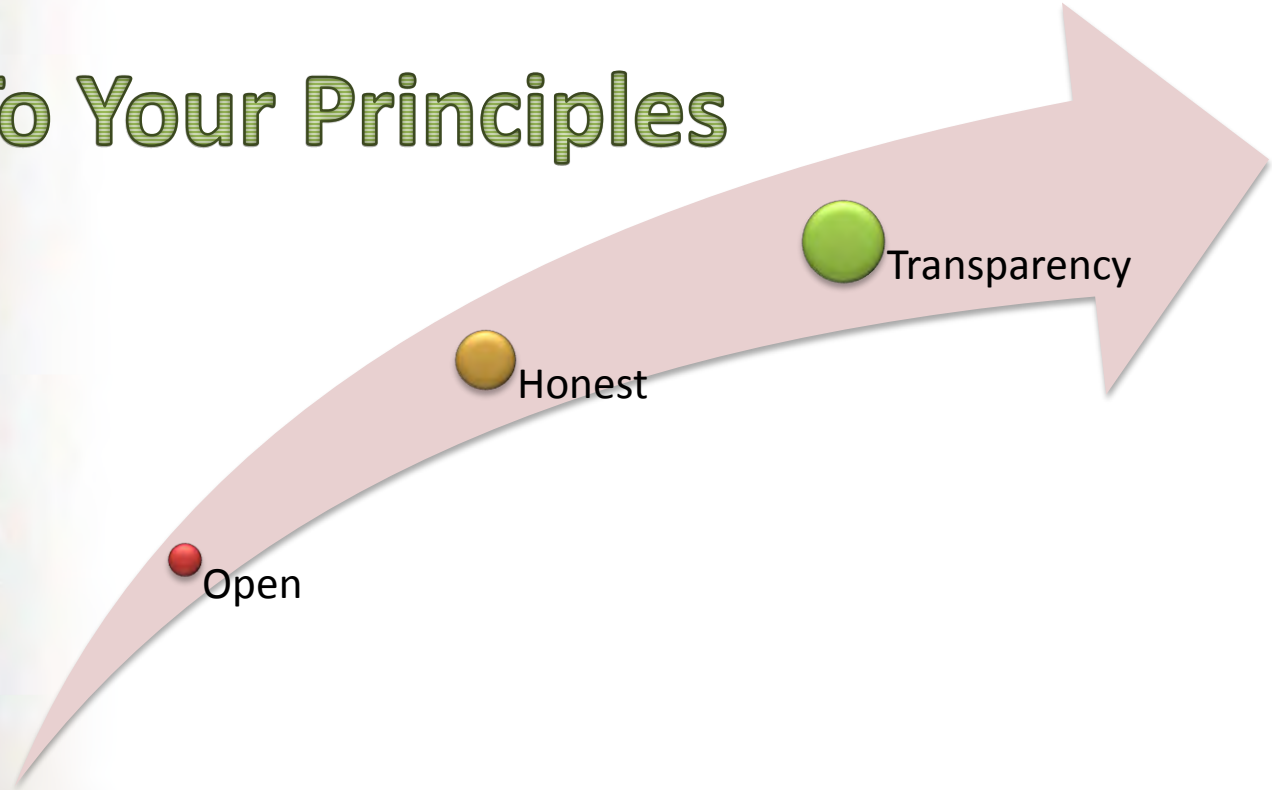
LESSONS LEARNED



Public Information



Stick To Your Principles

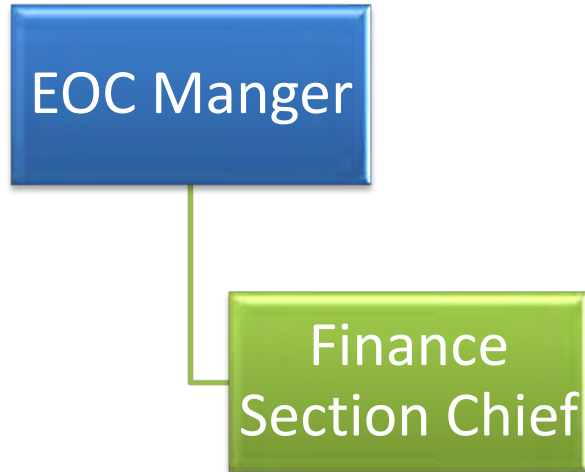


Closing the EOC





Finance Section





RECEPTION CENTER / EVACUEE SUPPORT





Social Media



SPECIAL THANKS





Gainford After Action Report

smckerry@parklandcounty.com

Linked in[®]